



Apple iPhone/iPad

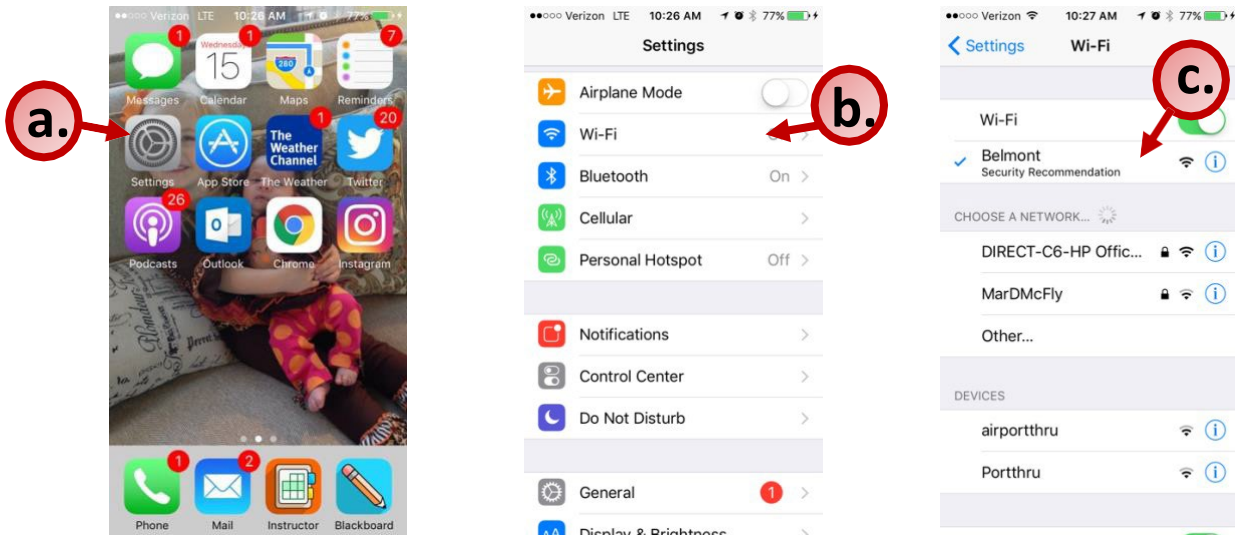
1. Connect to Belmont Wi-Fi network.
2. Print from a document or app.
3. Adjust Printer Options.
4. Pick up printing.



BruinPrint requires a connection to the Belmont wireless network.

1. Connect to Belmont Wi-Fi Network.

- Tap the **Settings** app on your device.
- Tap **Wi-Fi** and then tap **Belmont**.
- A checkmark will indicate a successful connection.

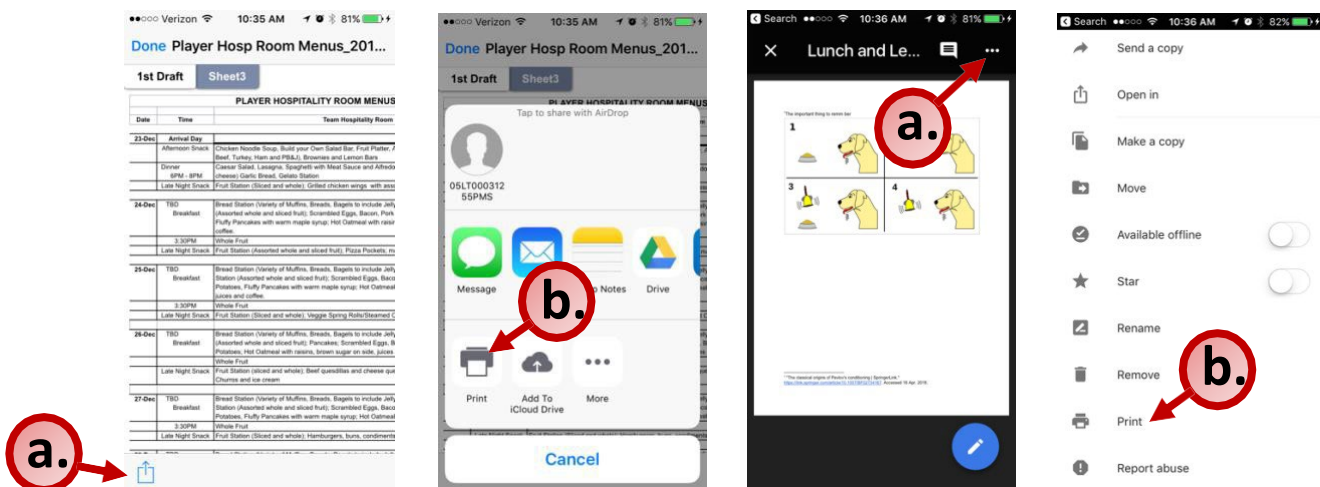


2. Print from a document or app.

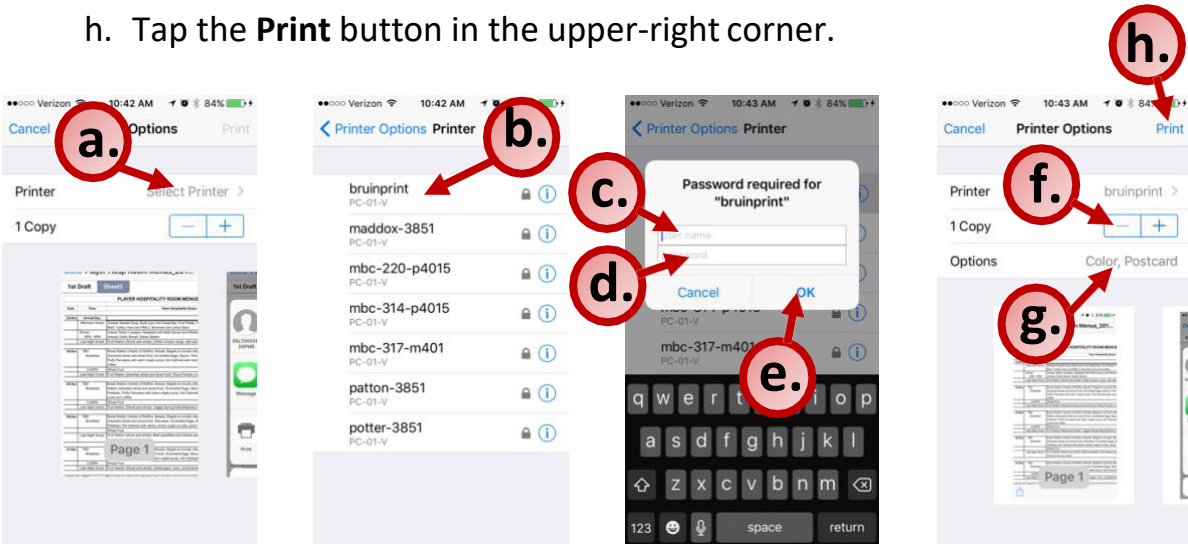
- Within a document or app, tap the **Action (Share)** or the **Menu** icon.
- A pop-up menu will appear. Tap **Print**.

EXAMPLE: Print from Document (i.e., Excel)

EXAMPLE: Print from App (i.e., Google Drive)



3. **Adjust Printer Options.**
- a. Tap **Select Printer**
 - b. Tap **bruinprint**.
 - c. Type your BruinPrint account name (**i.e., Belmont email address**).
 - d. Type your BruinPrint password (**i.e., Belmont email password**).
 - e. Tap **OK** (password box will disappear).
 - f. Edit number of copies.
 - g. Adjust advanced printing options (e.g., two-sided, color)
 - i. **Please be aware of your default settings – some devices are defaulted to COLOR PRINT.**
 - h. Tap the **Print** button in the upper-right corner.



4. Pick up printing.

- a. Walk to a BruinPrint station.
- b. Swipe your BUID card in the card reader.
- c. The display screen will list current printings.
- d. Tap the document you want to print.
- e. Tap the **Print** button on the bottom-right corner of the display screen.
- f. Once the document prints, tap the **Log Out** button at the top-right corner of the display screen.

